



**Ref: 1962**

**Location:** Mazarron  
**Type:** Country House  
**Price:** €289,000  
**Bedrooms:** 3  
**Bathrooms:** 2  
**Pool:** Yes



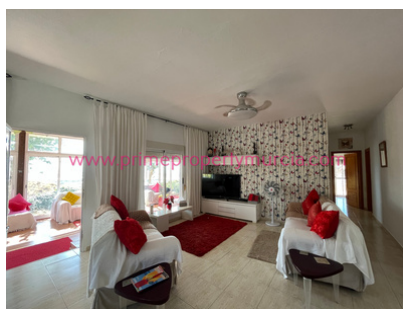
CHARMING 3 BEDROOM, 2 BATHROOM DETACHED COUNTRY HOUSE SITUATED ON A 2,250M2 PLOT ON THE EDGE OF PASTRANA NEAR PUERTO DE MAZARRON WITH AMAZING VIEWS OF THE SEA AND MOUNTAINS. THE PROPERTY WAS COMPLETED IN 2004 TO A HIGH STANDARD.

Entrance to this property is via a solid unmade road, leading to the garden at the front of the property where there is ample space for parking for several vehicles. From here through a large glazed terrace for lounging and dining is the front door leading into a good size lounge/dining room, which in turn leads to a large well equipped kitchen. There are also a 3 very good sized double bedrooms, all with built-in wardrobes and large ceiling fans and two bathrooms.

Outside there are several terraces with panoramic views of the mountains and amazing sea views. Behind the property there is an area of land with a private swimming pool. The gardens have some beautiful mature plants and trees throughout, there is also a separate pedestrian gate leading to the quiet entry road.

The property also has a large 140m2 roof terrace, again with stunning sea views.

Pastrana is located only a 5 minute drive from Puerto de Mazarron which has miles of fine sand beaches with blue flag awards for cleanliness, excellent amenities including several large supermarkets, banks, a medical centre, shops, fabulous beaches and a stunning marina surrounded by superb bars and restaurants serving a mixture of culinary delights! The airports of Murcia International (Corvera) and Alicante are 45 minutes and 1 hour 10 minutes drive away respectively.



To enquire about this property please call +34 646 692 471

Email: [info@primepropertymurcia.com](mailto:info@primepropertymurcia.com) / Website: [www.primepropertymurcia.com](http://www.primepropertymurcia.com)

All details are correct to the best of our knowledge

Price excludes 8% transfer tax